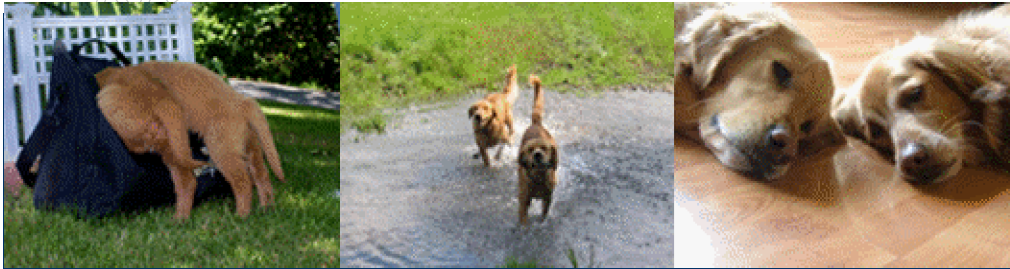


WDR CHAT TIME!!!!



GOLDEN RETRIEVER RESCUE OF WI
www.grrow.org

Happy holidays from WDR! All the 'mews' that's fit to print

Once again another year of rescue is drawing to a close. Hopefully everyone is ending on a positive note and in a better spot than they were last year. We've all felt the repercussions due to dwindling donations and fewer adoptions. Seems like the only 'increase' a lot of rescues and shelters have been experiencing lately is more people needing to re-home their animals. With the economy in such

disarray for a lot of the public, it wasn't surprising. If you have a little time, material (food, quilts, towels, etc) or extra money, please consider donating to one of your local shelters or rescue's...they can definitely use it!

DON'T LEAVE ME.....SEPARATION ANXIETY????

Does your dog get destructive when you're gone all day? It might be separation anxiety that's fueling her behaviors. Try these steps.

Spend 20 minutes every day ignoring your dog so alone time won't feel so strange. Also, while you are still at home try isolating her for a few minutes each day in her safe zone, be it a crate or a room she hangs out in when you're gone. Start with just a few minutes, but you can work up to an hour or two until she's comfortable being there by herself. When you do leave, give her plenty to do -- chew toys, treat puzzles, and other diversions. Upon your return, don't make a big deal of it. Just go about your business for a few minutes and say hello when your dog is calmer.

More info to check out: Patricia McConnell "I'll be Home Soon"

Teeth - to clean or not to clean????
It is estimated that 85% of cats and dogs suffer from periodontal disease. October is National Pet Wellness month. The best way to avoid having your pet become ill or have to go under anesthesia for teeth cleaning is regular brushing! So since Fido can't brush his own teeth, it is up to you to take over this job! Talk with your vet as to the best products for your particular animal, but don't ever use human toothpaste! Pet toothpastes come in a variety of flavors that dogs love! You can check them out and how to clean their teeth at a variety of websites online. Those biscuits that promise to help with tartar etc do not take the place of regular brushing though! Visit <http://www.dogs-trainingtips.com/cleaning-teeth.html>



SPOTLIGHT ON RESCUE: GOLDEN RETRIEVER RESCUE OF WISCONSIN (GRROW)

1. What breed of animal do you rescue? [Golden Retrievers](#)
2. How long have you been involved with breed rescue: [GRROW was established in May of 2000.](#)
3. What is your website address? www.grrow.org
4. What is the hardest part of doing rescue? [Not being able to get the dogs into foster homes quick enough and a lack of foster homes.](#)
5. What is the most rewarding part of doing rescue? [The look on the new adoptive families' faces when they adopt a golden and the success stories and photographs the adopters send in to us.](#)
6. What item(s) would you find helpful if people wanted to donate something to your rescue? [Monetary donations are always helpful to help with our vet bills. Items such as stamps, dog toys, premium dog food are all wonderful donations.](#)
7. Are you looking for volunteers? [Yes](#) If so, how can people get in touch with you? They can email us at contact@grrow.org

GRROW cont'd:

8. Do you have any events that your rescue will be attending in the near future?
[Washington County Pet Expo on October 21, 2007](#) and our [Dog walk at Lapham Peak on October 20, 2007](#)
9. What is the most prevalent misconception about your breed of dog? [They are calm and don't require much exercise and come already trained or don't need training at all.](#)
10. What one thing would you like the public to know about your rescue? [We are proud of our placement successes. We rarely have dogs returned to GRROW for not being a good match.](#)



